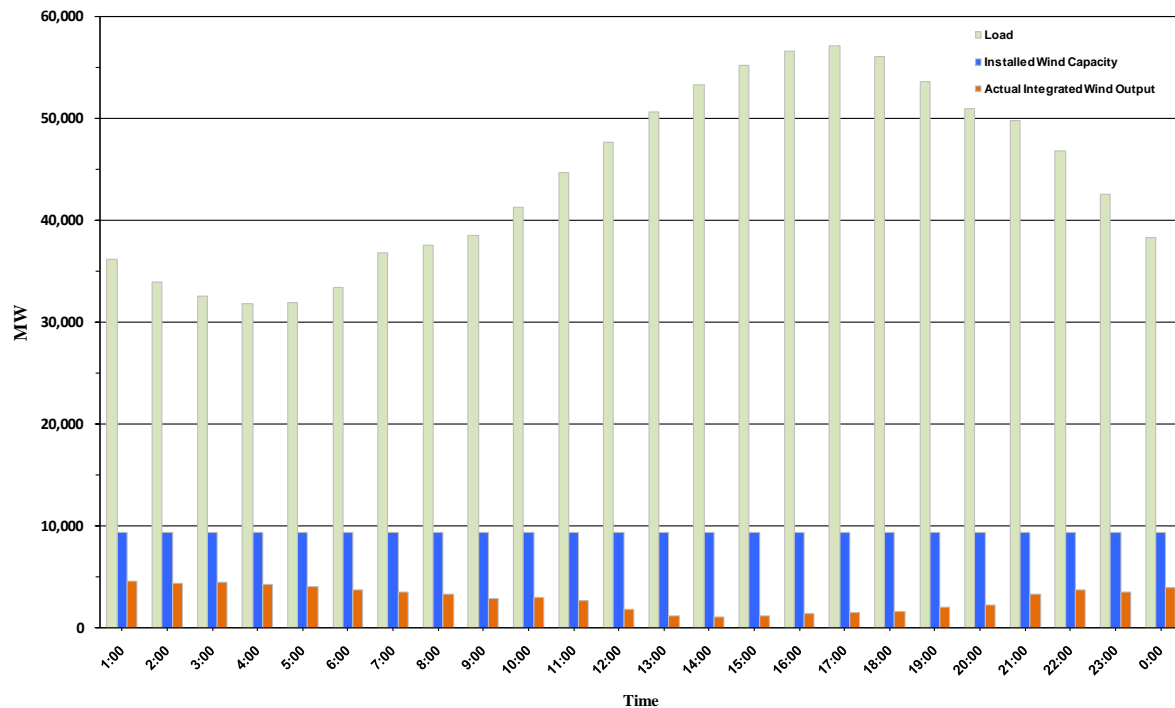




ERCOT Grid Operations Wind Penetration Report: 09/15/10

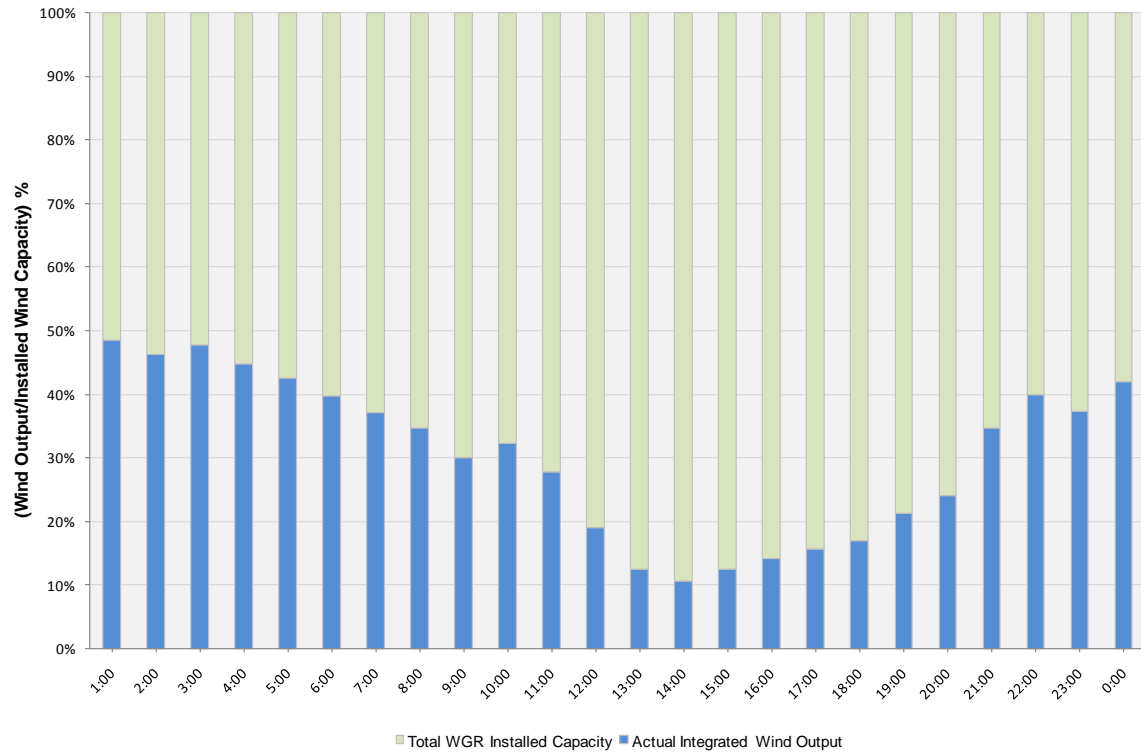
Peak Load	57,091 MW
Load Peak Hour	17
Wind Record 06/12/10	7016 MW
Max Wind value	4671 MW
Wind Peak Hour	00:00:04
Wind Penetration %	12.40

Hourly Average Actual Load vs. Actual Wind Output
09-15-2010

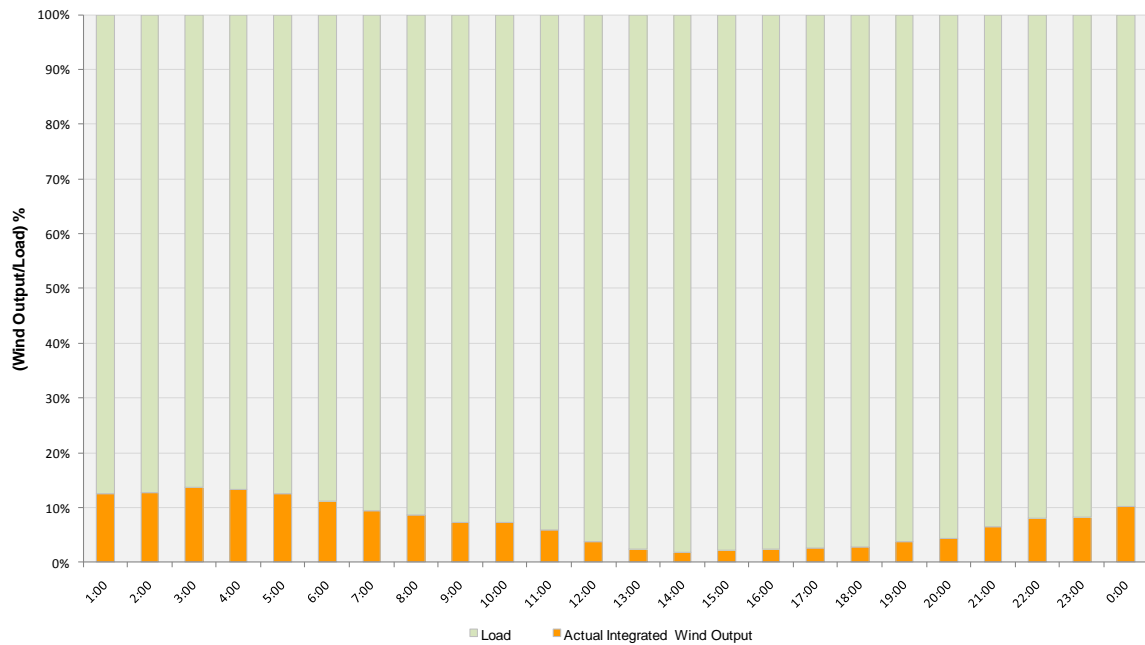




Actual Wind Output as a Percentage of the Total Installed Wind Capacity
09-15-2010



Actual Wind Output as a Percentage of the ERCOT Load
09-15-2010





ERCOT Load vs. Actual Wind Output 09/08/10 - 09/15/10

